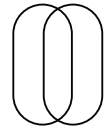
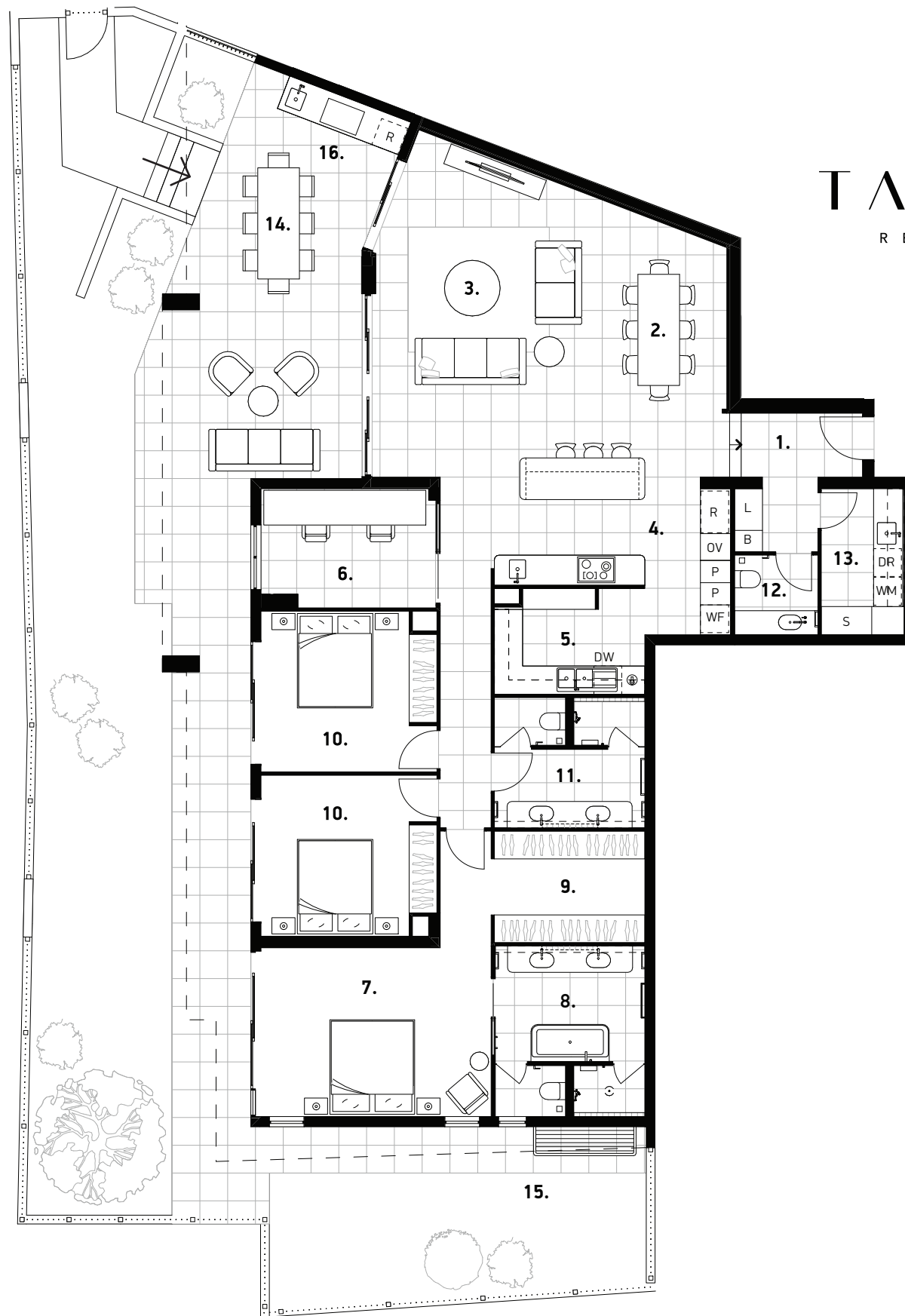


# Apartment 2, Level 1



**TALLOW**  
RESIDENCES



## Residence

(Issued 03.02.22)

## APARTMENT 2

Apartment Type E, Level 1

3 Bedrooms  
2.5 Bathrooms  
2 Secured Carparks

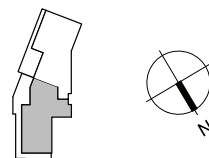
## Residence Area

Internal Area: 196m<sup>2</sup>  
External Area: 68m<sup>2</sup>  
Total Area: 264m<sup>2</sup>

## Plan Scale



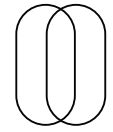
## Residence Location



## Legend

1. ENTRY LOBBY	10. BEDROOM	B	BROOM/UTILITY
2. DINING	11. BATHROOM	DR	DRYER
3. LIVING	12. POWDER ROOM	DW	DISHWASHER
4. KITCHEN	13. LAUNDRY	L	LINEN
5. BUTLER'S PANTRY	14. TERRACE	OV	OVEN/COMBI OVEN
6. OFFICE	15. DRYING COURT	P	PANTRY
7. MASTER BEDROOM	16. BBQ	R	REFRIGERATOR
8. MASTER ENSUITE		S	SERVICES
9. WALK-IN ROBE		WF	WINE FRIDGE
		WM	WASHING MACHINE

**Disclaimer:** Plan not to scale. Any images, renders or plans shown are indicative only and subject to change. Images and plans are an artist's impression and are conceptual in nature. Images and plans may depict landscaping, fixtures, fittings, furniture, features, finishes and inclusions including (without limitation) lights, finishes, windows, window furnishings, tiling, stonework and plants which are not included in the design of the unit and/or are not included in the advertised price for the unit. Such items or materials may not be available from the developer or its suppliers. Unless described as an inclusion features are not available for the displayed price for the unit. Unit prices and availability are subject to change without notice. The Developer reserves its right to withdraw units sale at any time without notice. The Developer does not make any representations or give any warranties that the information set out herein is or will remain accurate or complete at all times and they disclaim all liability for harm, loss, costs or damages which arises in connection with any use or reliance on the information.



## Residence

(Issued 03.02.22)

### APARTMENT 4

#### Apartment Type B, Level 2

3 Bedrooms  
2.5 Bathrooms  
2 Secured Carparks

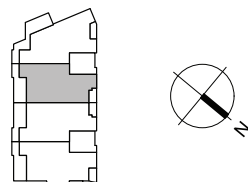
## Residence Area

Internal Area: 207m<sup>2</sup>  
External Area: 52m<sup>2</sup>  
Total Area: 259m<sup>2</sup>

## Plan Scale



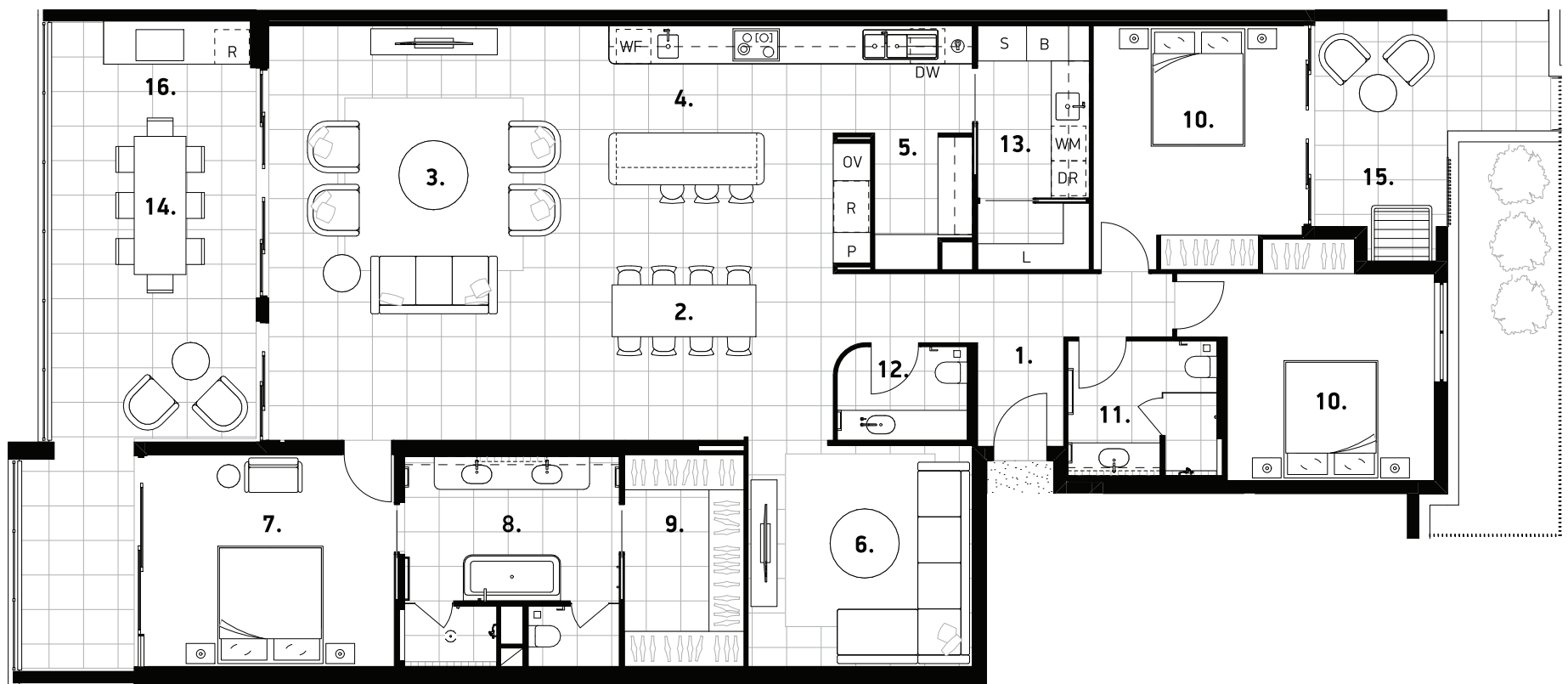
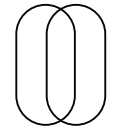
## Residence Location



## Legend

1. ENTRY LOBBY	10. BEDROOM	B	BROOM/UTILITY
2. DINING	11. BATHROOM	DR	DRYER
3. LIVING	12. POWDER ROOM	DW	DISHWASHER
4. KITCHEN	13. LAUNDRY	L	LINEN
5. BUTLER'S PANTRY	14. BALCONY	OV	OVEN/COMBI OVEN
6. MEDIA	15. DRYING COURT	P	PANTRY
7. MASTER BEDROOM	16. BBQ	R	REFRIGERATOR
8. MASTER ENSUITE		S	SERVICES
9. WALK-IN ROBE		WF	WINE FRIDGE
		WM	WASHING MACHINE

**Disclaimer:** Plan not to scale. Any images, renders or plans shown are indicative only and subject to change. Images and plans are an artist's impression and are conceptual in nature. Images and plans may depict landscaping, fixtures, fittings, furniture, features, finishes and inclusions including (without limitation) lights, finishes, windows, window furnishings, tiling, stonework and plants which are not included in the design of the unit and/or are not included in the advertised price for the unit. Such items or materials may not be available from the developer or its suppliers. Unless described as an inclusion features are not available for the displayed price for the unit. Unit prices and availability are subject to change without notice. The Developer reserves its right to withdraw units sale at any time without notice. The Developer does not make any representations or give any warranties that the information set out herein is or will remain accurate or complete at all times and they disclaim all liability for harm, loss, costs or damages which arises in connection with any use or reliance on the information.



## Residence

(Issued 03.02.22)

### APARTMENT 5

Apartment Type B, Level 2

3 Bedrooms  
2.5 Bathrooms  
2 Secured Carparks

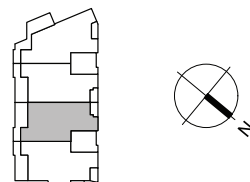
## Residence Area

Internal Area: 207m<sup>2</sup>  
External Area: 52m<sup>2</sup>  
Total Area: 259m<sup>2</sup>

## Plan Scale



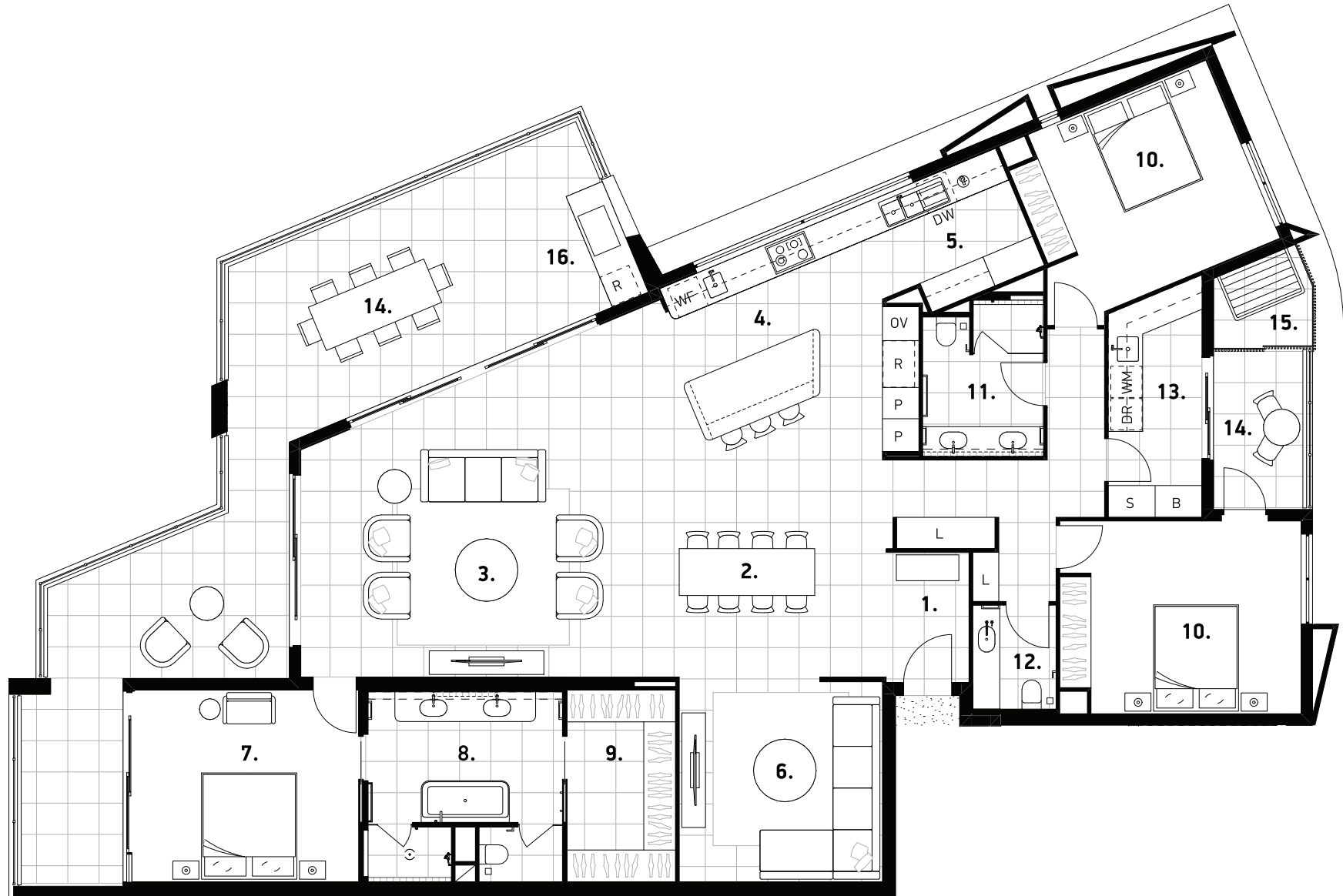
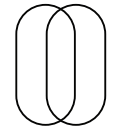
## Residence Location



## Legend

1. ENTRY LOBBY	10. BEDROOM	B	BROOM/UTILITY
2. DINING	11. BATHROOM	DR	DRYER
3. LIVING	12. POWDER ROOM	DW	DISHWASHER
4. KITCHEN	13. LAUNDRY	L	LINEN
5. BUTLER'S PANTRY	14. BALCONY	OV	OVEN/COMBI OVEN
6. MEDIA	15. DRYING COURT	P	PANTRY
7. MASTER BEDROOM	16. BBQ	R	REFRIGERATOR
8. MASTER ENSUITE		S	SERVICES
9. WALK-IN ROBE		WF	WINE FRIDGE
		WM	WASHING MACHINE

**Disclaimer:** Plan not to scale. Any images, renders or plans shown are indicative only and subject to change. Images and plans are an artist's impression and are conceptual in nature. Images and plans may depict landscaping, fixtures, fittings, furniture, features, finishes and inclusions including (without limitation) lights, finishes, windows, window furnishings, tiling, stonework and plants which are not included in the design of the unit and/or are not included in the advertised price for the unit. Such items or materials may not be available from the developer or its suppliers. Unless described as an inclusion features are not available for the displayed price for the unit. Unit prices and availability are subject to change without notice. The Developer reserves its right to withdraw units sale at any time without notice. The Developer does not make any representations or give any warranties that the information set out wherein is or will remain accurate or complete at all times and they disclaim all liability for harm, loss, costs or damages which arises in connection with any use or reliance on the information.



## Residence

(Issued 03.02.22)

## APARTMENT 9

### Apartment Type A, Level 3

3 Bedrooms  
2.5 Bathrooms  
2 Secured Carparks

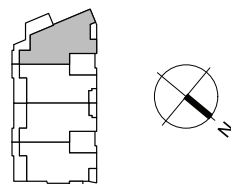
## Residence Area

Internal Area: 219m<sup>2</sup>  
External Area: 66m<sup>2</sup>  
Total Area: 285m<sup>2</sup>

## Plan Scale



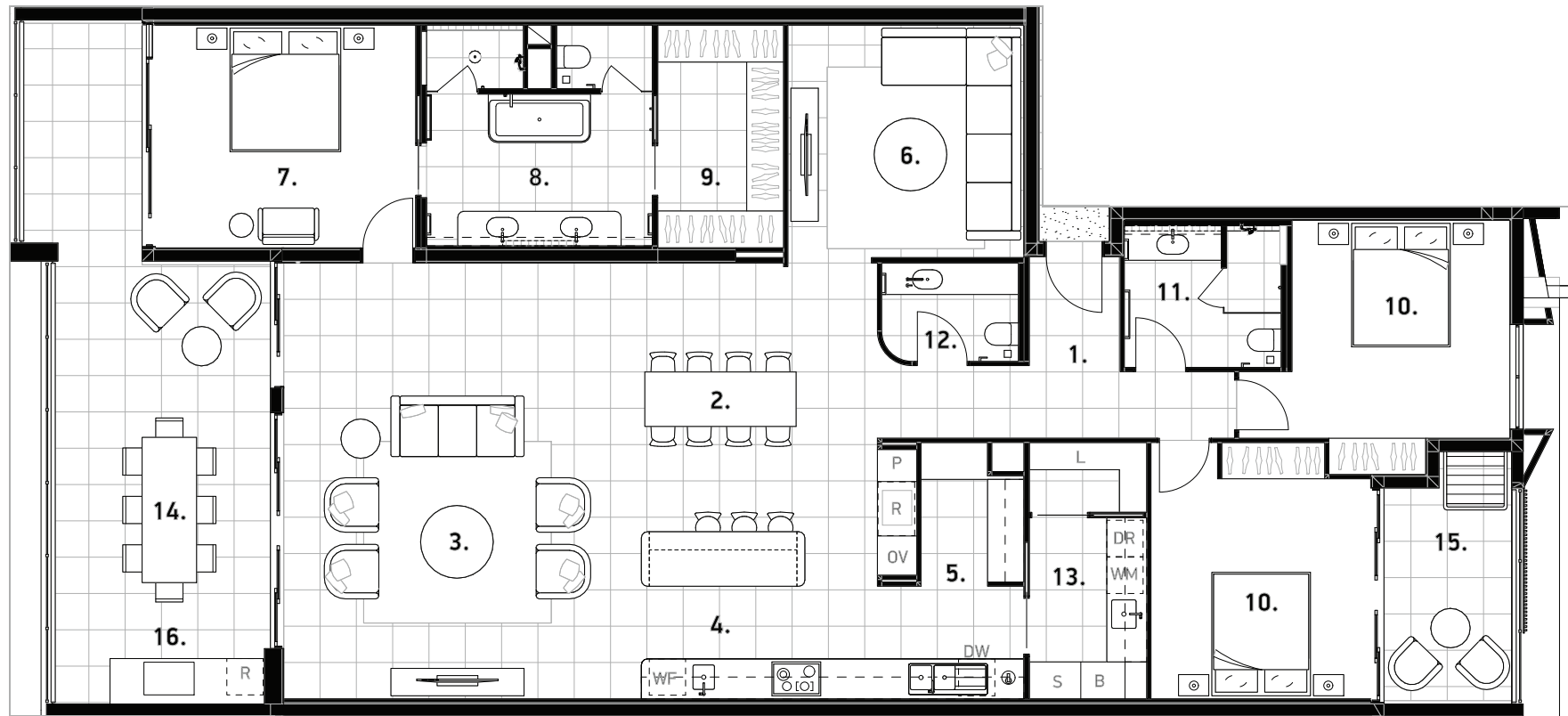
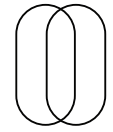
## Residence Location



## Legend

1. ENTRY LOBBY	10. BEDROOM	B	BROOM/UTILITY
2. DINING	11. BATHROOM	DR	DRYER
3. LIVING	12. POWDER ROOM	DW	DISHWASHER
4. KITCHEN	13. LAUNDRY	L	LINEN
5. BUTLER'S PANTRY	14. BALCONY	OV	OVEN/COMBI OVEN
6. MEDIA	15. DRYING COURT	P	PANTRY
7. MASTER BEDROOM	16. BBQ	R	REFRIGERATOR
8. MASTER ENSUITE		S	SERVICES
9. WALK-IN ROBE		WF	WINE FRIDGE
		WM	WASHING MACHINE

**Disclaimer:** Plan not to scale. Any images, renders or plans shown are indicative only and subject to change. Images and plans are an artist's impression and are conceptual in nature. Images and plans may depict landscaping, fixtures, fittings, furniture, features, finishes and inclusions including (without limitation) lights, finishes, windows, window furnishings, tiling, stonework and plants which are not included in the design of the unit and/or are not included in the advertised price for the unit. Such items or materials may not be available from the developer or its suppliers. Unless described as an inclusion features are not available for the displayed price for the unit. Unit prices and availability are subject to change without notice. The Developer reserves its right to withdraw units sale at any time without notice. The Developer does not make any representations or give any warranties that the information set out herein is or will remain accurate or complete at all times and they disclaim all liability for harm, loss, costs or damages which arises in connection with any use or reliance on the information.



## Residence

(Issued 03.02.22)

### APARTMENT 10

Apartment Type B, Level 3

3 Bedrooms  
2.5 Bathrooms  
2 Secured Carparks

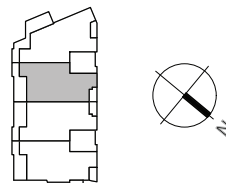
## Residence Area

Internal Area: 207m<sup>2</sup>  
External Area: 48m<sup>2</sup>  
Total Area: 255m<sup>2</sup>

## Plan Scale



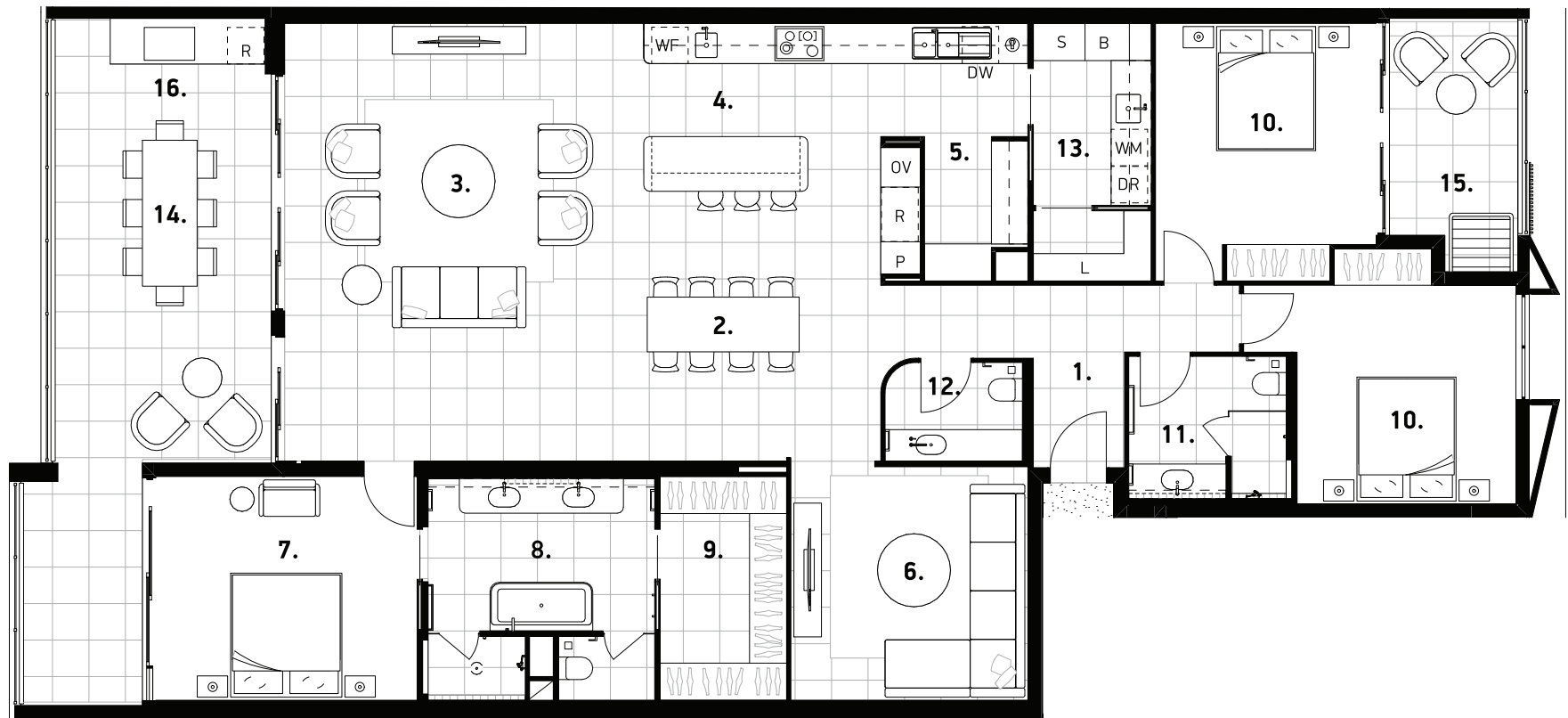
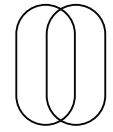
## Residence Location



## Legend

1. ENTRY LOBBY	10. BEDROOM	B	BROOM/UTILITY
2. DINING	11. BATHROOM	DR	DRYER
3. LIVING	12. POWDER ROOM	DW	DISHWASHER
4. KITCHEN	13. LAUNDRY	L	LINEN
5. BUTLER'S PANTRY	14. BALCONY	OV	OVEN/COMBI OVEN
6. MEDIA	15. DRYING COURT	P	PANTRY
7. MASTER BEDROOM	16. BBQ	R	REFRIGERATOR
8. MASTER ENSUITE		S	SERVICES
9. WALK-IN ROBE		WF	WINE FRIDGE
		WM	WASHING MACHINE

**Disclaimer:** Plan not to scale. Any images, renders or plans shown are indicative only and subject to change. Images and plans are an artist's impression and are conceptual in nature. Images and plans may depict landscaping, fixtures, fittings, furniture, features, finishes and inclusions including (without limitation) lights, finishes, windows, window furnishings, tiling, stonework and plants which are not included in the design of the unit and/or are not included in the advertised price for the unit. Such items or materials may not be available from the developer or its suppliers. Unless described as an inclusion features are not available for the displayed price for the unit. Unit prices and availability are subject to change without notice. The Developer reserves its right to withdraw units sale at any time without notice. The Developer does not make any representations or give any warranties that the information set out wherein is or will remain accurate or complete at all times and they disclaim all liability for harm, loss, costs or damages which arises in connection with any use or reliance on the information.



## Residence

(Issued 03.02.22)

### APARTMENT 11

Apartment Type B, Level 3

3 Bedrooms  
2.5 Bathrooms  
2 Secured Carparks

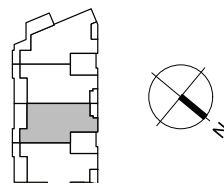
## Residence Area

Internal Area: 207m<sup>2</sup>  
External Area: 48m<sup>2</sup>  
Total Area: 255m<sup>2</sup>

## Plan Scale



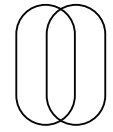
## Residence Location



## Legend

1. ENTRY LOBBY	10. BEDROOM	B	BROOM/UTILITY
2. DINING	11. BATHROOM	DR	DRYER
3. LIVING	12. POWDER ROOM	DW	DISHWASHER
4. KITCHEN	13. LAUNDRY	L	LINEN
5. BUTLER'S PANTRY	14. BALCONY	OV	OVEN/COMBI OVEN
6. MEDIA	15. DRYING COURT	P	PANTRY
7. MASTER BEDROOM	16. BBQ	R	REFRIGERATOR
8. MASTER ENSUITE		S	SERVICES
9. WALK-IN ROBE		WF	WINE FRIDGE
		WM	WASHING MACHINE

**Disclaimer:** Plan not to scale. Any images, renders or plans shown are indicative only and subject to change. Images and plans are an artist's impression and are conceptual in nature. Images and plans may depict landscaping, fixtures, fittings, furniture, features, finishes and inclusions including (without limitation) lights, finishes, windows, window furnishings, tiling, stonework and plants which are not included in the design of the unit and/or are not included in the advertised price for the unit. Such items or materials may not be available from the developer or its suppliers. Unless described as an inclusion features are not available for the displayed price for the unit. Unit prices and availability are subject to change without notice. The Developer reserves its right to withdraw units sale at any time without notice. The Developer does not make any representations or give any warranties that the information set out wherein is or will remain accurate or complete at all times and they disclaim all liability for harm, loss, costs or damages which arises in connection with any use or reliance on the information.



## Residence

(Issued 03.02.22)

## APARTMENT 12

Apartment Type C, Level 3

3 Bedrooms  
2.5 Bathrooms  
2 Secured Carparks

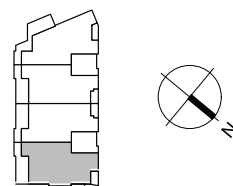
## Residence Area

Internal Area: 212m<sup>2</sup>  
External Area: 55m<sup>2</sup>  
Total Area: 267m<sup>2</sup>

## Plan Scale



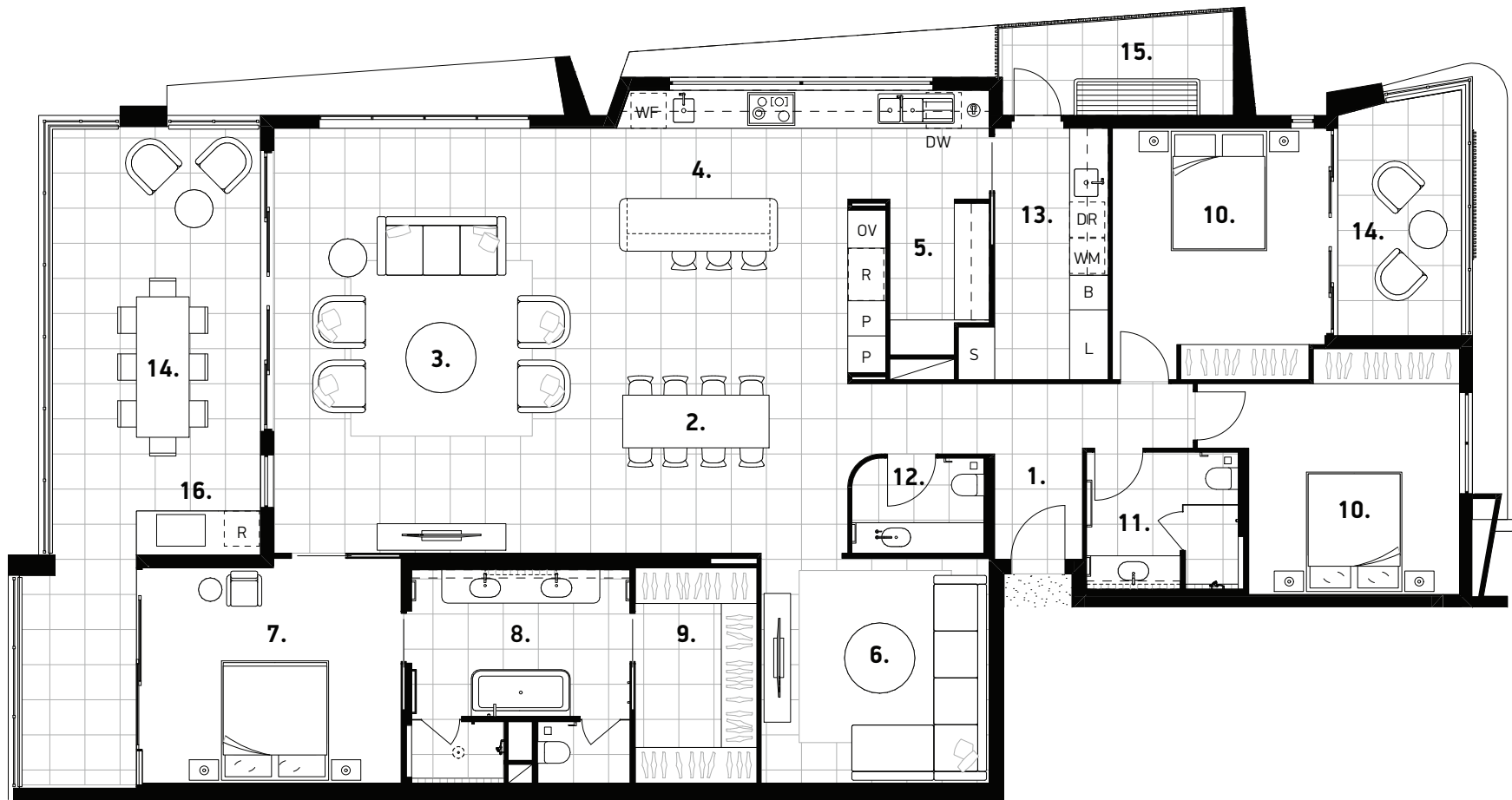
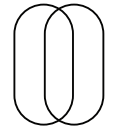
## Residence Location



## Legend

1. ENTRY LOBBY	10. BEDROOM	B	BROOM/UTILITY
2. DINING	11. BATHROOM	DR	DRYER
3. LIVING	12. POWDER ROOM	DW	DISHWASHER
4. KITCHEN	13. LAUNDRY	L	LINEN
5. BUTLER'S PANTRY	14. BALCONY	OV	OVEN/COMBI OVEN
6. MEDIA	15. DRYING COURT	P	PANTRY
7. MASTER BEDROOM	16. BBQ	R	REFRIGERATOR
8. MASTER ENSUITE		S	SERVICES
9. WALK-IN ROBE		WF	WINE FRIDGE
		WM	WASHING MACHINE

**Disclaimer:** Plan not to scale. Any images, renders or plans shown are indicative only and subject to change. Images and plans are an artist's impression and are conceptual in nature. Images and plans may depict landscaping, fixtures, fittings, furniture, features, finishes and inclusions including (without limitation) lights, finishes, windows, window furnishings, tiling, stonework and plants which are not included in the design of the unit and/or are not included in the advertised price for the unit. Such items or materials may not be available from the developer or its suppliers. Unless described as an inclusion features are not available for the displayed price for the unit. Unit prices and availability are subject to change without notice. The Developer reserves its right to withdraw units sale at any time without notice. The Developer does not make any representations or give any warranties that the information set out wherein is or will remain accurate or complete at all times and they disclaim all liability for harm, loss, costs or damages which arises in connection with any use or reliance on the information.



## Residence

(Issued 03.02.22)

### APARTMENT 13

Apartment Type C, Level 3

3 Bedrooms  
2.5 Bathrooms  
2 Secured Carparks

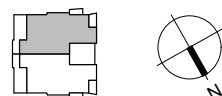
## Residence Area

Internal Area: 212m<sup>2</sup>  
External Area: 54m<sup>2</sup>  
Total Area: 266m<sup>2</sup>

## Plan Scale



## Residence Location

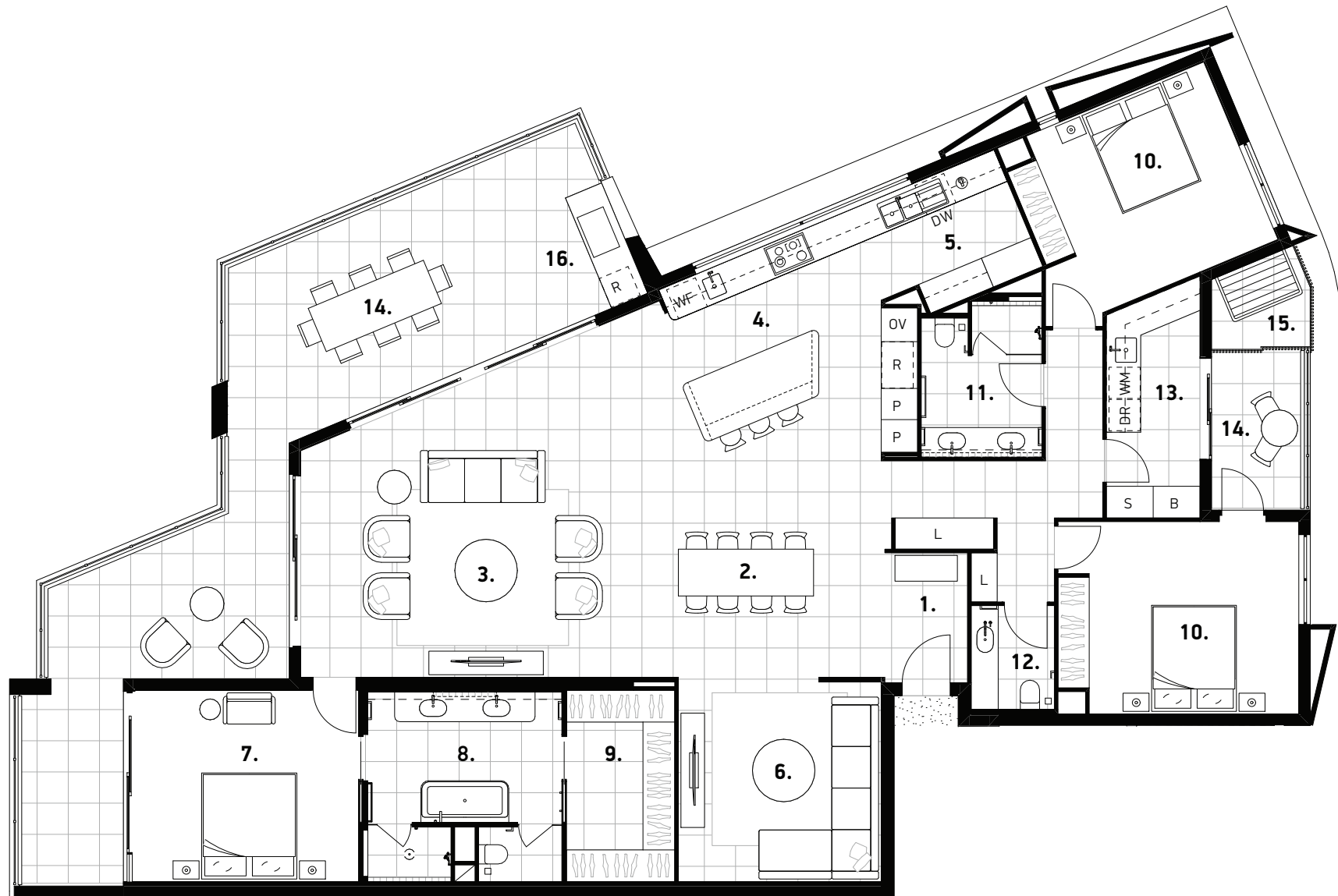
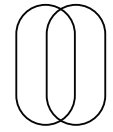


## Legend

1. ENTRY LOBBY	10. BEDROOM	B	BROOM/UTILITY
2. DINING	11. BATHROOM	DR	DRYER
3. LIVING	12. POWDER ROOM	DW	DISHWASHER
4. KITCHEN	13. LAUNDRY	L	LINEN
5. BUTLER'S PANTRY	14. BALCONY	OV	OVEN/COMBI OVEN
6. MEDIA	15. DRYING COURT	P	PANTRY
7. MASTER BEDROOM	16. BBQ	R	REFRIGERATOR
8. MASTER ENSUITE		S	SERVICES
9. WALK-IN ROBE		WF	WINE FRIDGE
		WM	WASHING MACHINE

**Disclaimer:** Plan not to scale. Any images, renders or plans shown are indicative only and subject to change. Images and plans are an artist's impression and are conceptual in nature. Images and plans may depict landscaping, fixtures, fittings, furniture, features, finishes and inclusions including (without limitation) lights, finishes, windows, window furnishings, tiling, stonework and plants which are not included in the design of the unit and/or are not included in the advertised price for the unit. Such items or materials may not be available from the developer or its suppliers. Unless described as an inclusion features are not available for the displayed price for the unit. Unit prices and availability are subject to change without notice. The Developer reserves its right to withdraw units sale at any time without notice. The Developer does not make any representations or give any warranties that the information set out wherein is or will remain accurate or complete at all times and they disclaim all liability for harm, loss, costs or damages which arises in connection with any use or reliance on the information.





## Residence

(Issued 03.02.22)

### APARTMENT 15

Apartment Type A, Level 4

3 Bedrooms

2.5 Bathrooms

2 Secured Carparks

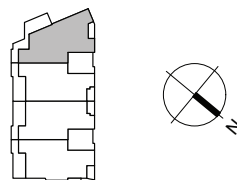
## Residence Area

Internal Area: 218m<sup>2</sup>  
External Area: 66m<sup>2</sup>  
Total Area: 284m<sup>2</sup>

## Plan Scale



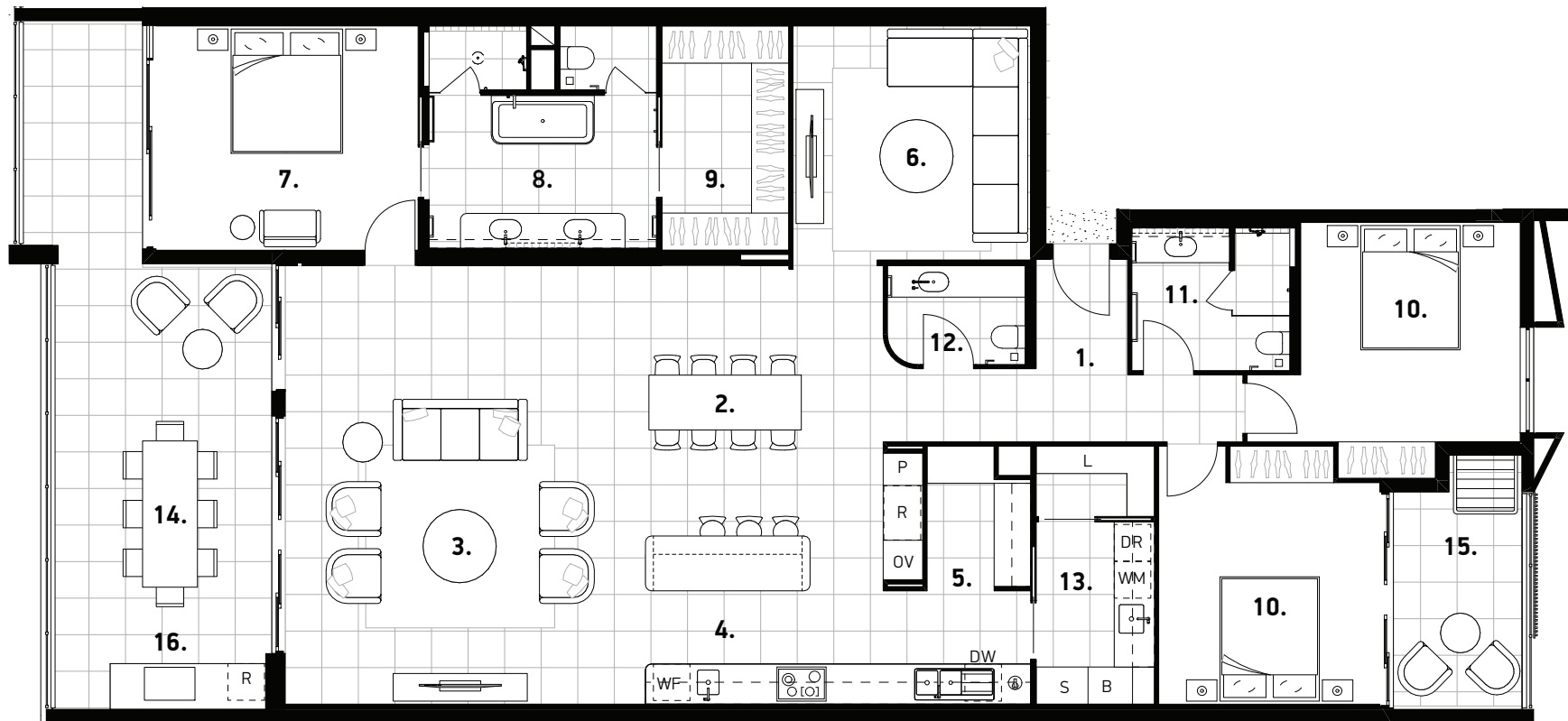
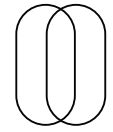
## Residence Location



## Legend

1. ENTRY LOBBY	10. BEDROOM	B	BROOM/UTILITY
2. DINING	11. BATHROOM	DR	DRYER
3. LIVING	12. POWDER ROOM	DW	DISHWASHER
4. KITCHEN	13. LAUNDRY	L	LINEN
5. BUTLER'S PANTRY	14. BALCONY	OV	OVEN/COMBI OVEN
6. MEDIA	15. DRYING COURT	P	PANTRY
7. MASTER BEDROOM	16. BBQ	R	REFRIGERATOR
8. MASTER ENSUITE		S	SERVICES
9. WALK-IN ROBE		WF	WINE FRIDGE
		WM	WASHING MACHINE

**Disclaimer:** Plan not to scale. Any images, renders or plans shown are indicative only and subject to change. Images and plans are an artist's impression and are conceptual in nature. Images and plans may depict landscaping, fixtures, fittings, furniture, features, finishes and inclusions including (without limitation) lights, finishes, windows, window furnishings, tiling, stonework and plants which are not included in the design of the unit and/or are not included in the advertised price for the unit. Such items or materials may not be available from the developer or its suppliers. Unless described as an inclusion features are not available for the displayed price for the unit. Unit prices and availability are subject to change without notice. The Developer reserves its right to withdraw units sale at any time without notice. The Developer does not make any representations or give any warranties that the information set out herein is or will remain accurate or complete at all times and they disclaim all liability for harm, loss, costs or damages which arises in connection with any use or reliance on the information.



## Residence

(Issued 03.02.22)

### APARTMENT 16

Apartment Type B, Level 4

3 Bedrooms  
2.5 Bathrooms  
2 Secured Carparks

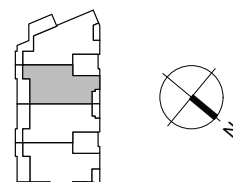
## Residence Area

Internal Area: 207m<sup>2</sup>  
External Area: 48m<sup>2</sup>  
Total Area: 255m<sup>2</sup>

## Plan Scale



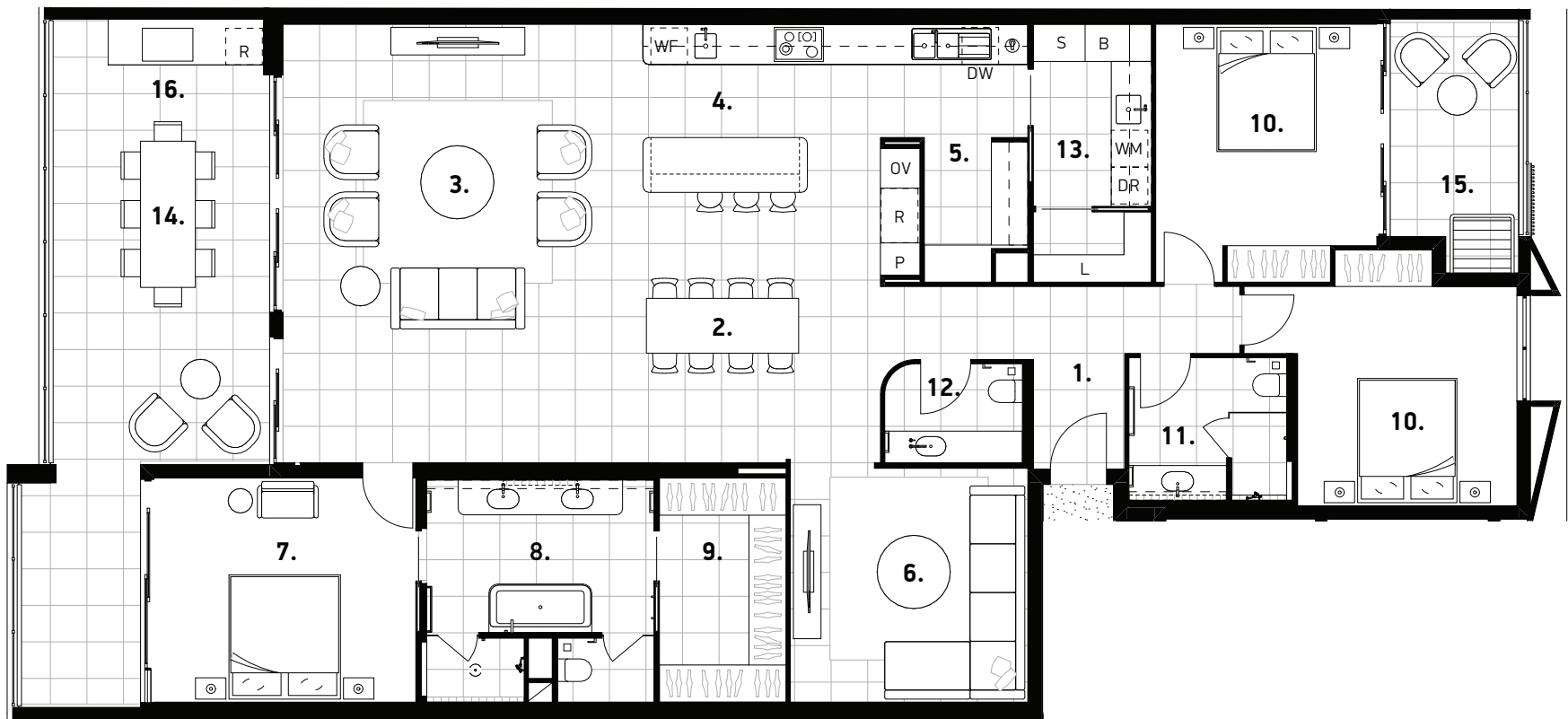
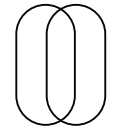
## Residence Location



## Legend

1. ENTRY LOBBY	10. BEDROOM	B	BROOM/UTILITY
2. DINING	11. BATHROOM	DR	DRYER
3. LIVING	12. POWDER ROOM	DW	DISHWASHER
4. KITCHEN	13. LAUNDRY	L	LINEN
5. BUTLER'S PANTRY	14. BALCONY	OV	OVEN/COMBI OVEN
6. MEDIA	15. DRYING COURT	P	PANTRY
7. MASTER BEDROOM	16. BBQ	R	REFRIGERATOR
8. MASTER ENSUITE		S	SERVICES
9. WALK-IN ROBE		WF	WINE FRIDGE
		WM	WASHING MACHINE

**Disclaimer:** Plan not to scale. Any images, renders or plans shown are indicative only and subject to change. Images and plans are an artist's impression and are conceptual in nature. Images and plans may depict landscaping, fixtures, fittings, furniture, features, finishes and inclusions including (without limitation) lights, finishes, windows, window furnishings, tiling, stonework and plants which are not included in the design of the unit and/or are not included in the advertised price for the unit. Such items or materials may not be available from the developer or its suppliers. Unless described as an inclusion features are not available for the displayed price for the unit. Unit prices and availability are subject to change without notice. The Developer reserves its right to withdraw units sale at any time without notice. The Developer does not make any representations or give any warranties that the information set out wherein is or will remain accurate or complete at all times and they disclaim all liability for harm, loss, costs or damages which arises in connection with any use or reliance on the information.



## Residence

(Issued 03.02.22)

## APARTMENT 17

Apartment Type B, Level 3

3 Bedrooms  
2.5 Bathrooms  
2 Secured Carparks

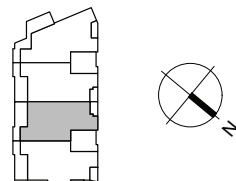
## Residence Area

Internal Area: 207m<sup>2</sup>  
External Area: 48m<sup>2</sup>  
Total Area: 255m<sup>2</sup>

## Plan Scale



## Residence Location

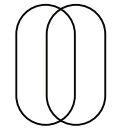


## Legend

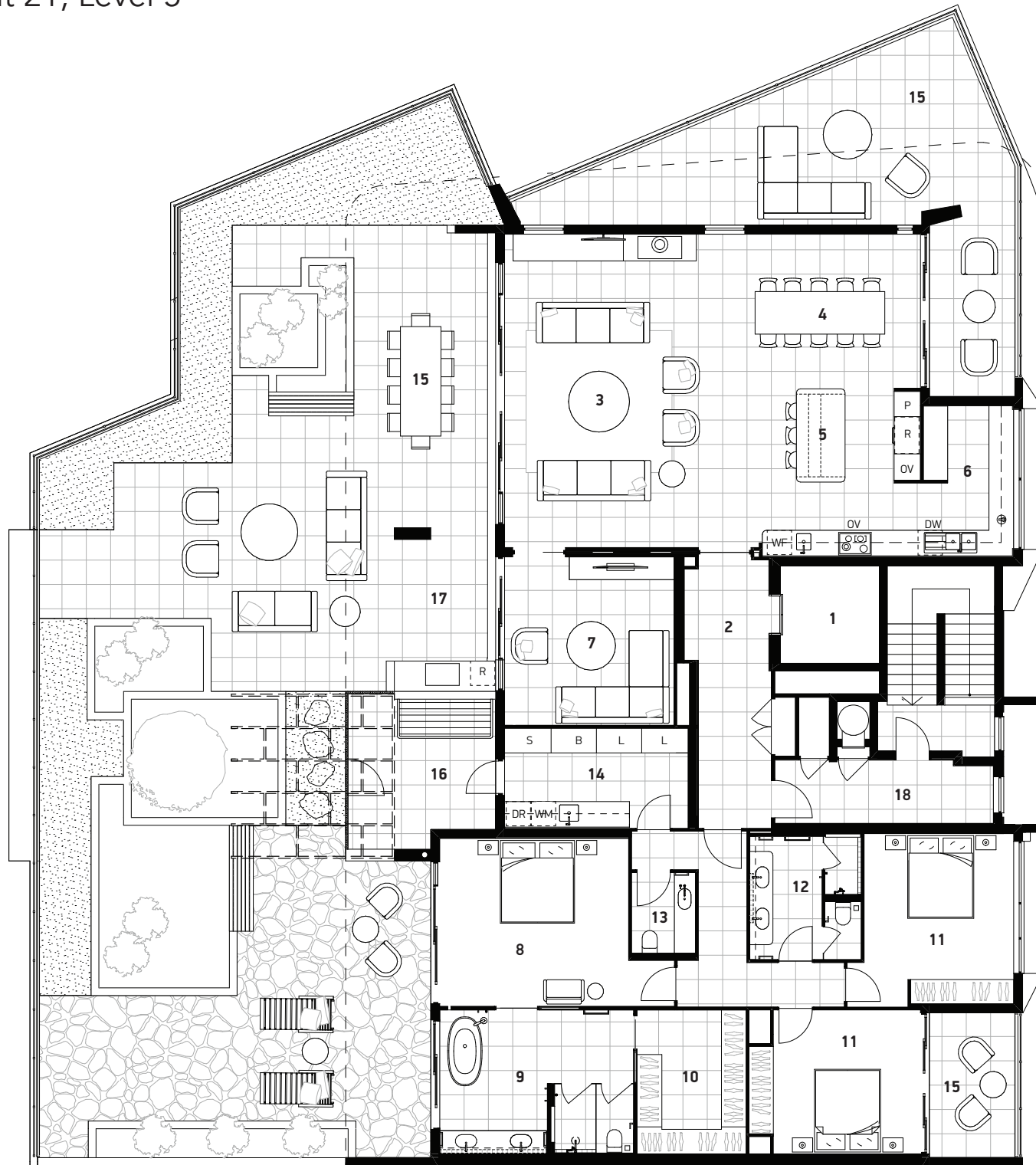
1. ENTRY LOBBY	10. BEDROOM	B	BROOM/UTILITY
2. DINING	11. BATHROOM	DR	DRYER
3. LIVING	12. POWDER ROOM	DW	DISHWASHER
4. KITCHEN	13. LAUNDRY	L	LINEN
5. BUTLER'S PANTRY	14. BALCONY	OV	OVEN/COMBI OVEN
6. MEDIA	15. DRYING COURT	P	PANTRY
7. MASTER BEDROOM	16. BBQ	R	REFRIGERATOR
8. MASTER ENSUITE		S	SERVICES
9. WALK-IN ROBE		WF	WINE FRIDGE
		WM	WASHING MACHINE

**Disclaimer:** Plan not to scale. Any images, renders or plans shown are indicative only and subject to change. Images and plans are an artist's impression and are conceptual in nature. Images and plans may depict landscaping, fixtures, fittings, furniture, features, finishes and inclusions including (without limitation) lights, finishes, windows, window furnishings, tiling, stonework and plants which are not included in the design of the unit and/or are not included in the advertised price for the unit. Such items or materials may not be available from the developer or its suppliers. Unless described as an inclusion features are not available for the displayed price for the unit. Unit prices and availability are subject to change without notice. The Developer reserves its right to withdraw units sale at any time without notice. The Developer does not make any representations or give any warranties that the information set out wherein is or will remain accurate or complete at all times and they disclaim all liability for harm, loss, costs or damages which arises in connection with any use or reliance on the information.

# Apartment 21, Level 5



**TALLOW**  
RESIDENCES



## Residence

(Issued 16.09.22)

### APARTMENT 21

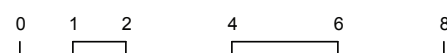
Apartment Type F, Level 5

3 Bedrooms  
2.5 Bathrooms  
2 Secured Carparks

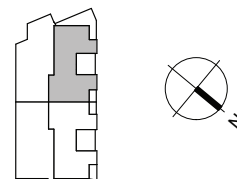
## Residence Area

Internal Area: 250m<sup>2</sup>  
External Area: 296m<sup>2</sup>  
Total Area: 546m<sup>2</sup>

## Plan Scale



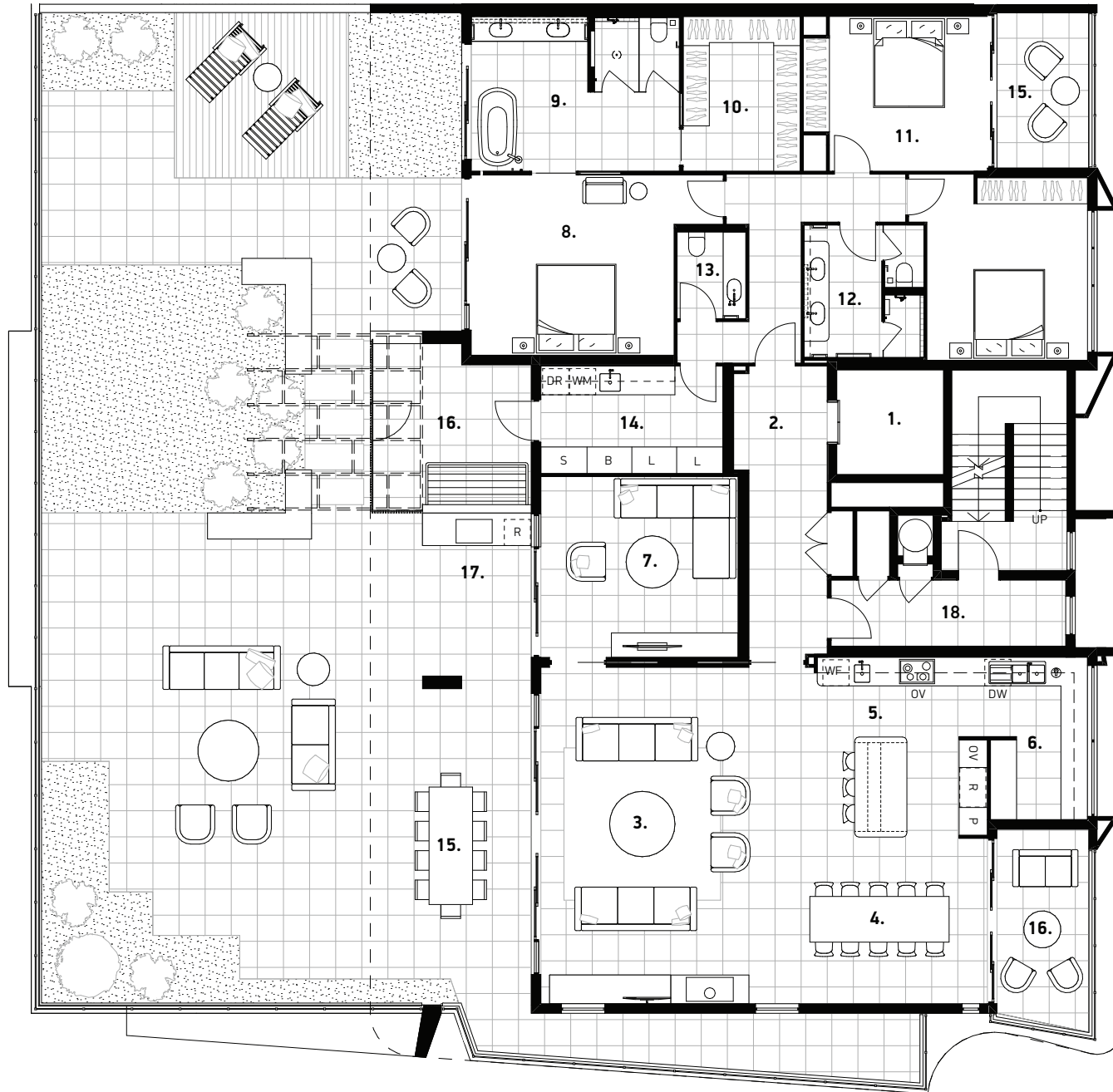
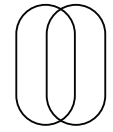
## Residence Location



## Legend

1. LIFT	10. WALK IN ROBE	B	BROOM/UTILITY
2. ENTRY LOBBY	11. BEDROOM	DR	DRYER
3. LIVING	12. BATHROOM	DW	DISHWASHER
4. DINING	13. POWDER ROOM	L	LINEN
5. KITCHEN	14. LAUNDRY	OV	OVEN/COMBI OVEN
6. BUTLER'S PANTRY	15. BALCONY	P	PANTRY
7. MEDIA	16. DRYING COURT	R	REFRIGERATOR
8. MASTER BEDROOM	17. BBQ	S	SERVICES
9. MASTER ENSUITE	18. COMMON PROPERTY	WF	WINE FRIDGE
		WM	WASHING MACHINE

**Disclaimer:** Plan not to scale. Any images, renders or plans shown are indicative only and subject to change. Images and plans are an artist's impression and are conceptual in nature. Images and plans may depict landscaping, fixtures, fittings, furniture, features, finishes and inclusions including (without limitation) lights, finishes, windows, window furnishings, tiling, stonework and plants which are not included in the design of the unit and/or are not included in the advertised price for the unit. Such items or materials may not be available from the developer or its suppliers. Unless described as an inclusion features are not available for the displayed price for the unit. Unit prices and availability are subject to change without notice. The Developer reserves its right to withdraw units sale at any time without notice. The Developer does not make any representations or give any warranties that the information set out herein is or will remain accurate or complete at all times and they disclaim all liability for harm, loss, costs or damages which arises in connection with any use or reliance on the information.



**Residence**

(Issued 03.02.22)

**APARTMENT 22**

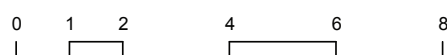
Apartment Type F, Level 5

- 3 Bedrooms
- 2.5 Bathrooms
- 2 Secured Carparks

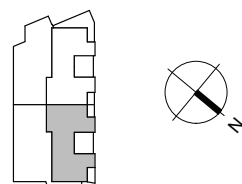
**Residence Area**

Internal Area: 263m<sup>2</sup>  
External Area: 273m<sup>2</sup>  
Total Area: 536m<sup>2</sup>

**Plan Scale**



**Residence Location**



**Legend**

- |                    |                     |    |                 |
|--------------------|---------------------|----|-----------------|
| 1. LIFT            | 10. WALK IN ROBE    | B  | BROOM/UTILITY   |
| 2. ENTRY LOBBY     | 11. BEDROOM         | DR | DRYER           |
| 3. LIVING          | 12. BATHROOM        | DW | DISHWASHER      |
| 4. DINING          | 13. POWDER ROOM     | L  | LINEN           |
| 5. KITCHEN         | 14. LAUNDRY         | OV | OVEN/COMBI OVEN |
| 6. BUTLER'S PANTRY | 15. BALCONY         | P  | PANTRY          |
| 7. MEDIA           | 16. DRYING COURT    | R  | REFRIGERATOR    |
| 8. MASTER BEDROOM  | 17. BBQ             | S  | SERVICES        |
| 9. MASTER ENSUITE  | 18. COMMON PROPERTY | WF | WINE FRIDGE     |
|                    |                     | WM | WASHING MACHINE |

**Disclaimer:** Plan not to scale. Any images, renders or plans shown are indicative only and subject to change. Images and plans are an artist's impression and are conceptual in nature. Images and plans may depict landscaping, fixtures, fittings, furniture, features, finishes and inclusions including (without limitation) lights, finishes, windows, window furnishings, tiling, stonework and plants which are not included in the design of the unit and/or are not included in the advertised price for the unit. Such items or materials may not be available from the developer or its suppliers. Unless described as an inclusion features are not available for the displayed price for the unit. Unit prices and availability are subject to change without notice. The Developer reserves its right to withdraw units sale at any time without notice. The Developer does not make any representations or give any warranties that the information set out herein is or will remain accurate or complete at all times and they disclaim all liability for harm, loss, costs or damages which arises in connection with any use or reliance on the information.