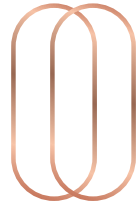


THE FINAL RELEASE

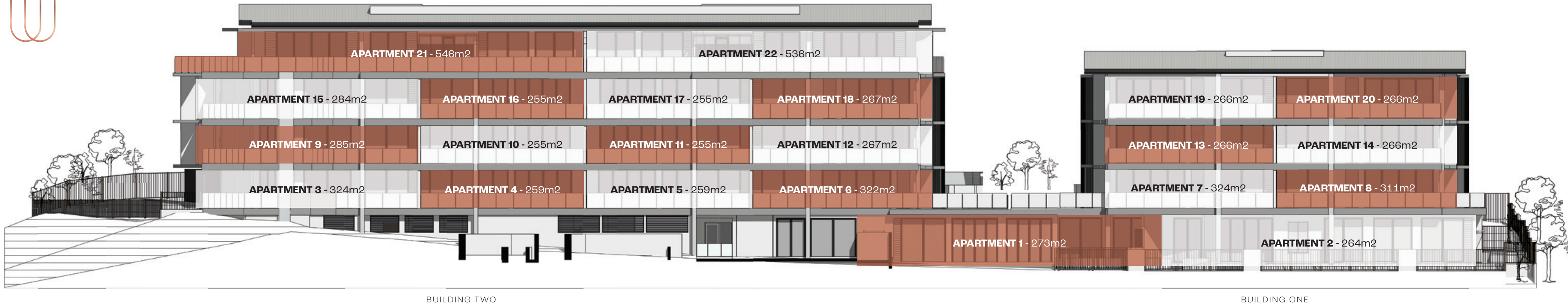


TALLOW  
RESIDENCES





\* UNIT AREAS REPRESENT INTERNAL AND EXTERNAL AREAS



## A RARE OPPORTUNITY FOR A SPECIAL FEW

The final sales release at Settler's Cove includes another exquisite penthouse and is your last chance to call this special part of inner Noosa home. Nestled harmoniously within natural conservation bushland, these house size apartments offer a unique combination of bright and airy spaciousness, yet private tranquility.

### Features in brief:

- Twenty Two luxury apartments
- Two apartments per lift lobby, plus exclusive private lift access to top floor penthouses
- Two unique penthouses with over 500m<sup>2</sup> of living space
- Ideal north-south orientation
- Pool outlook from all apartments
- Views over conservation bushland reserve
- Spacious outdoor living areas
- Private garden access from podium level apartments



# TALLOW

RESIDENCES



Display apartment open by appointment.  
Visit [www.tallowresidences.com.au](http://www.tallowresidences.com.au) or call 1300 10 10 50.



Every effort has been made to accurately describe the details of this development however this document is presented as a guide only. All marketing material, including models, illustrations and plans are indicative only. Recipients are advised to undertake their own investigations to satisfy themselves as to all aspects of the development. All details were correct at the time of printing and are subject to change without notice. This material is representative as a guide only and does not constitute an offer or inducement. Led By Design SET7110