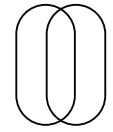
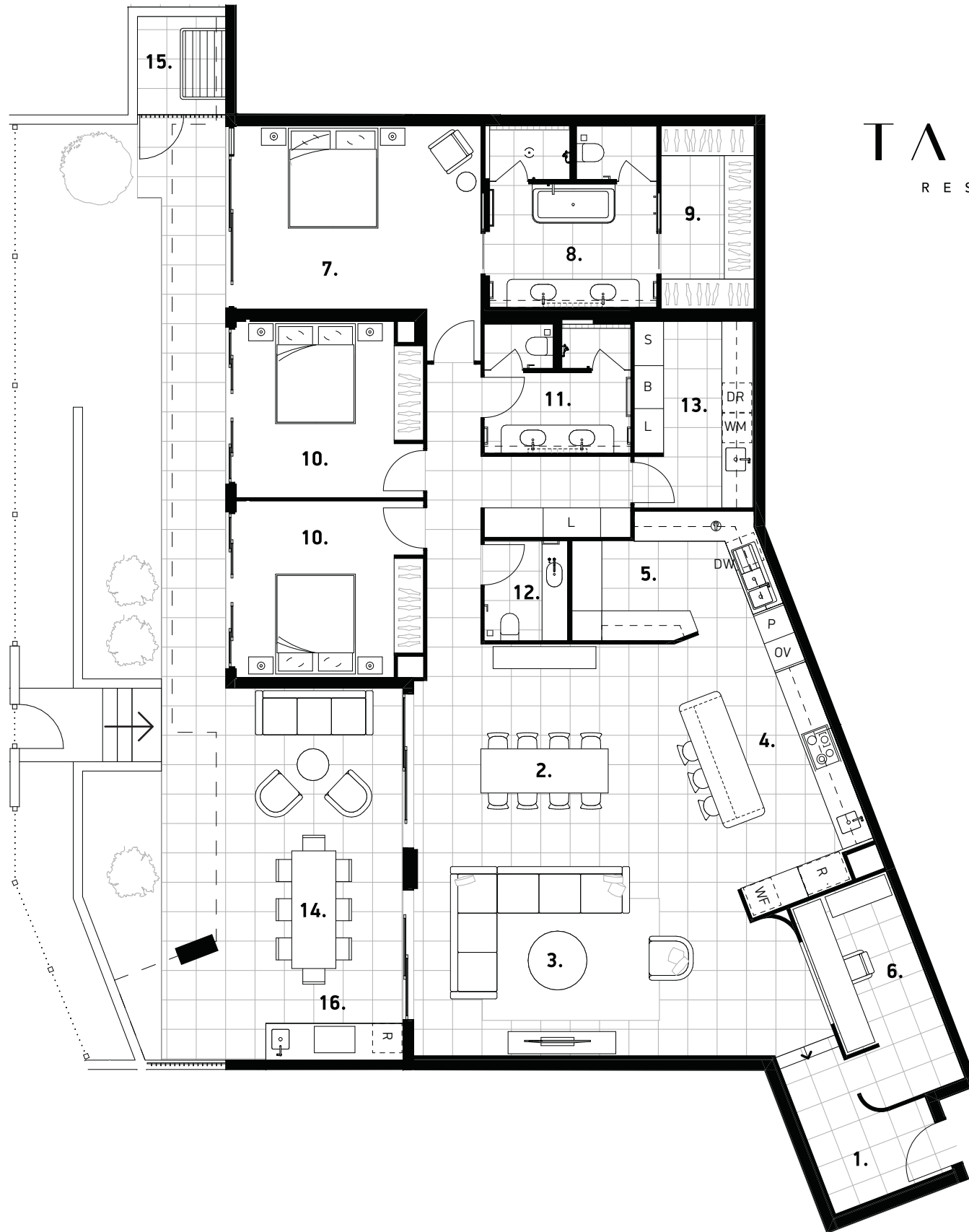


# Apartment 1, Level 1



**TALLOW**  
RESIDENCES



## Residence

(Issued 03.02.22)

## APARTMENT 1

### Apartment Type D, Level 1

3 Bedrooms  
2.5 Bathrooms  
2 Secured Carparks

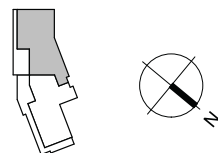
## Residence Area

Internal Area: 213m<sup>2</sup>  
External Area: 60m<sup>2</sup>  
Total Area: 273m<sup>2</sup>

## Plan Scale



## Residence Location



## Legend

1. ENTRY LOBBY	10. BEDROOM	B	BROOM/UTILITY
2. DINING	11. BATHROOM	DR	DRYER
3. LIVING	12. POWDER ROOM	DW	DISHWASHER
4. KITCHEN	13. LAUNDRY	L	LINEN
5. BUTLER'S PANTRY	14. TERRACE	OV	OVEN/COMBI OVEN
6. OFFICE	15. DRYING COURT	P	PANTRY
7. MASTER BEDROOM	16. BBQ	R	REFRIGERATOR
8. MASTER ENSUITE		S	SERVICES
9. WALK-IN ROBE		WF	WINE FRIDGE
		WM	WASHING MACHINE

**Disclaimer:** Plan not to scale. Any images, renders or plans shown are indicative only and subject to change. Images and plans are an artist's impression and are conceptual in nature. Images and plans may depict landscaping, fixtures, fittings, furniture, features, finishes and inclusions including (without limitation) lights, finishes, windows, window furnishings, tiling, stonework and plants which are not included in the design of the unit and/or are not included in the advertised price for the unit. Such items or materials may not be available from the developer or its suppliers. Unless described as an inclusion features are not available for the displayed price for the unit. Unit prices and availability are subject to change without notice. The Developer reserves its right to withdraw units sale at any time without notice. The Developer does not make any representations or give any warranties that the information set out herein is or will remain accurate or complete at all times and they disclaim all liability for harm, loss, costs or damages which arises in connection with any use or reliance on the information.